



The world's most advanced EDRMS

RecFind 6

### RecFind 6

RecFind 6 is Knowledgeone Corporation's latest version of the well known RecFind product line. RecFind began in 1986 as the world's then most innovative records management solution. It has progressed through 22 years and seven redesigns and rewrites to be one of the most successful records management products ever produced. The current version RecFind 5 is installed all around the world as a robust, scalable and proven Electronic Document and Records Management System (EDRMS) solution. RecFind 6 takes it to the next level.

### Full User Functionality

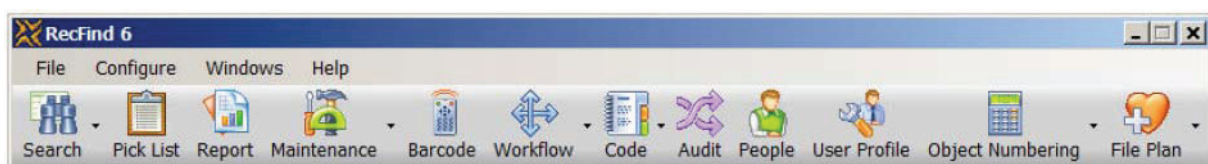
RecFind 6 is a tightly focused EDRMS solution specifically targeted at customers needing to manage records, electronic documents and emails. It includes, as standard, a full array of all the features you will ever need including imaging, document capture, security, standard reports, report writer, workflow, retention, importing, exporting, integration, barcode support (for fixed and portable readers), offsite records storage support, automatic versioning, check-in, check-out, tracking, requests, etc. RecFind 6 is a fully functional, fully integrated single product. There are no additional modules to buy to meet all of your EDRMS needs - it is a complete solution. RecFind 6 even comes with a standard integration engine and API (Xchange) plus a high level tool to allow you to change the RecFind 6 Data Model and business processes (DRM).

### Latest Technology

RecFind 6 is built on the very latest Microsoft .NET platform and uses Microsoft SQL Server 2005 as its relational database. The RecFind 6 client (all end user functions) is a latest technology Microsoft "smart client" implementation providing the twin benefits of a rich Windows interface with the ability to employ it across your Intranet or the Internet using web services.

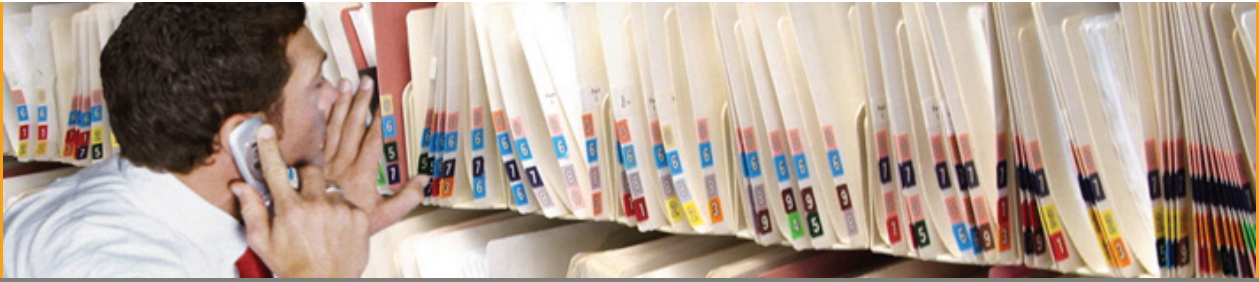
### Concurrent User Licensing

RecFind 6 clients are provided as concurrent user licenses; the most cost effective way to license software. One RecFind 6 license can easily support from 4 to 16 "real" users. Named or Seat licenses are easily four times more expensive.



RecFind 6 - Enhanced Tool Bar

one industry leader



The world's most advanced EDRMS

RecFind 6

### RecFind 6 Add-Ons

RecFind 6 has all the functionality you will require to manage your EDRMS, however Knowledgeone Corporation provides a range of "high-powered" add-ons for organizations needing more horsepower and a more "automatic" solution. **RecFind 6 Add-Ons include:**

#### Button

The world's simplest and easiest to use check-in and check-out tool. Fully integrated with MS Office.

#### GEM

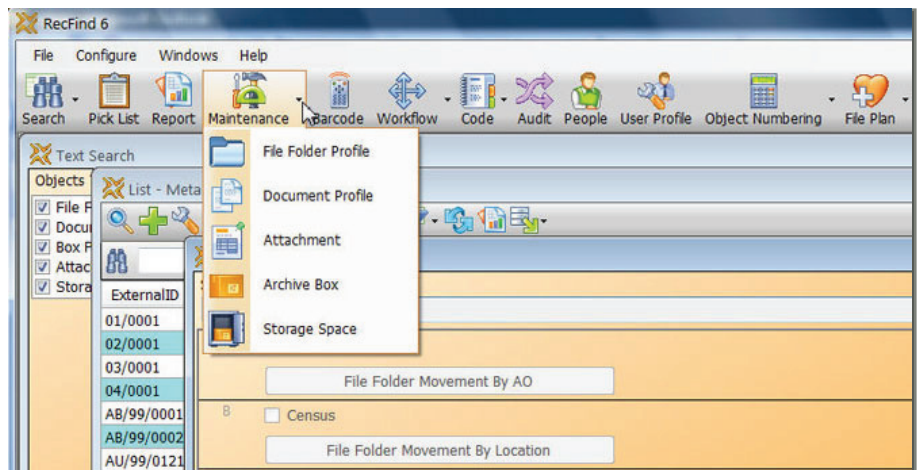
Fully automatic email management and archiving; connects direct to your email server.

#### RecCapture

Fully automatic electronic document management; connects direct to your system folders.

#### High Speed Scanning Module (HSSM)

For those customers with high volume document scanning requirements.



RecFind 6 - New User Interface

#### Mini-API

The Mini-API tool allows you to integrate RecFind 6 with any other application and allows other applications to use RecFind 6 as their electronic document repository.

### More Information

Knowledgeone Corporation's website includes comprehensive information on its industry leading product suites **RecFind Corporate** and **Knowledgeone**. You will also find online demonstrations and papers as well as detailed information on our support, services and quality assurance.

[www.knowledgeonecorp.com](http://www.knowledgeonecorp.com)

Contact [sales@knowledgeonecorp.com](mailto:sales@knowledgeonecorp.com)



[www.knowledgeonecorp.com](http://www.knowledgeonecorp.com)