

# RecFind 6 Mini-API

The RecFind 6 Mini-API creates links from an existing application to any object stored within RecFind 6.

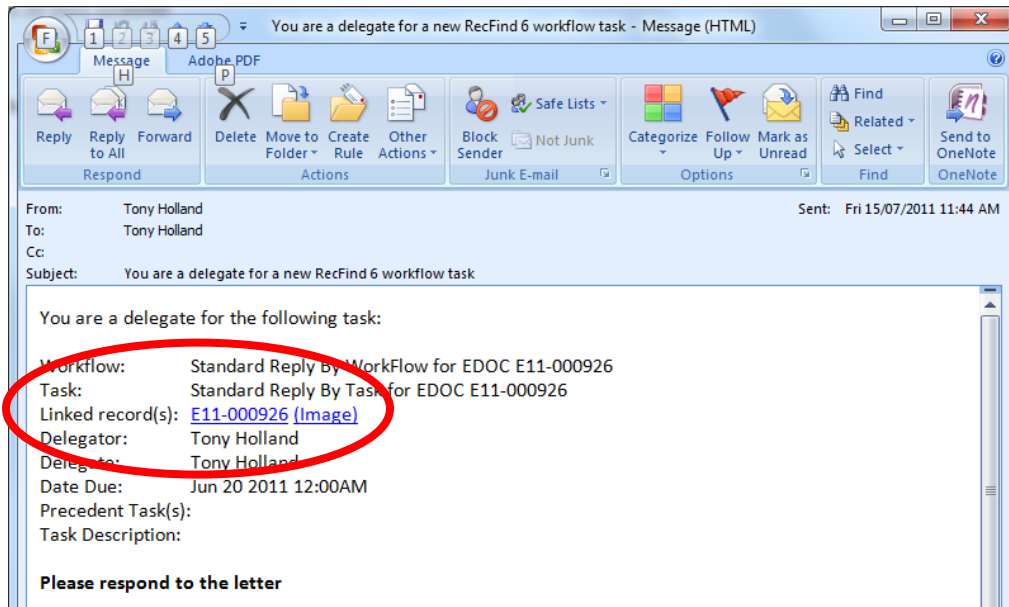
Any 'object' means any file folder profile, any document profile, any box profile and any electronic object or image stored in RecFind 6. It allows other applications to talk directly to RecFind 6 and request RecFind to expose (i.e., display for viewing in the browser window) any object in RecFind.

It is a way to 'image-enable' any other application using RecFind to capture and store all required electronic documents and images. It is also a way to access and view the Metadata of physical documents/containers such as paper, file folders and archive boxes where that Metadata is stored in RecFind.

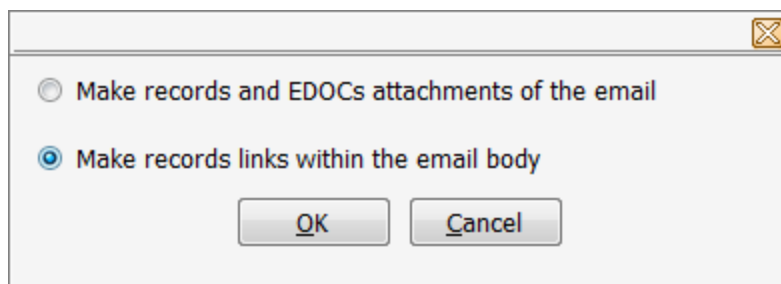
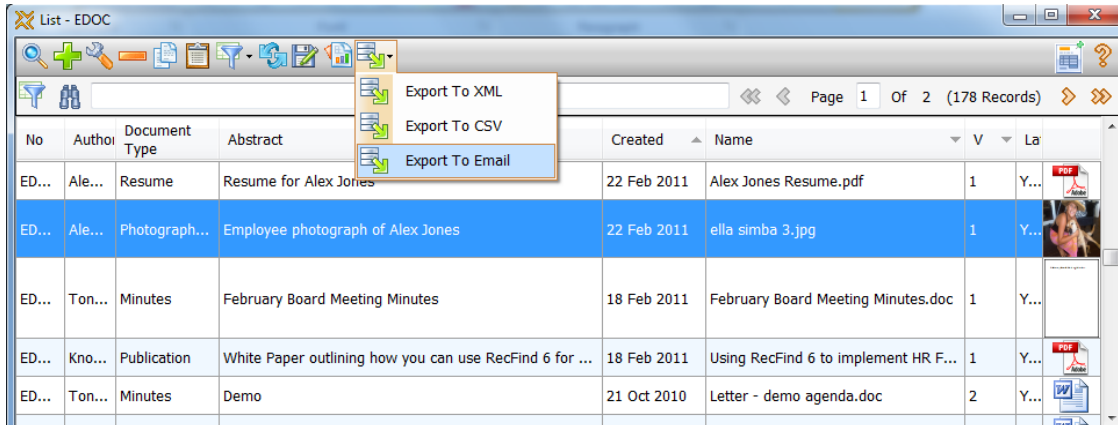
Metadata profiles and / or electronic objects are displayed by the Mini-API within an Internet Browser. The Mini-API is therefore relatively operating system (e.g. Windows, Mac, IOS & Linux) and browser (e.g. Internet Explorer, Firefox, Safari, Chrome & Opera) independent.

Typical applications for the Mini-API include:

- Integrate a 3<sup>rd</sup> party application to RecFind 6. For example, integrating with a Membership System. A user in the Membership System viewing a member's record can click on a link, which calls and passes a parameter (e.g. the record ID or External ID) to the Mini-API. The Mini-API would then present the related membership record stored within RecFind 6 within an Internet Browser.
- Incorporate a link in a RecFind 6 workflow task e-mail notification. The user can then jump to a workflow related metadata profile and / or electronic object, directly from the e-mail.



- Send a link in an e-mail to an electronic object or metadata profile stored within RecFind 6 via the RecFind 6 client, for example, when distributing incoming mail that has been scanned into RecFind 6. This can be beneficial compared to exporting the electronic object as an attachment in the e-mail, as it uses less network traffic and doesn't create copies of the electronic documents.



- Include links on an Intranet or Internet page to an electronic object or metadata profile stored within RecFind 6. For example, a Quality document published to employees on an Intranet site.
- “FYI” notifications. A user registering a document can select people who need to be notified about the document, via a linked table configured within a metadata profile. Upon saving the record RecFind 6 sends the selected people an email with details of the record and a link. By implementing the link using the Mini-API the recipient doesn’t need to navigate through RecFind to see the document, they click on the link and they are taken directly to the document – either to the metadata screen or directly to the image itself.